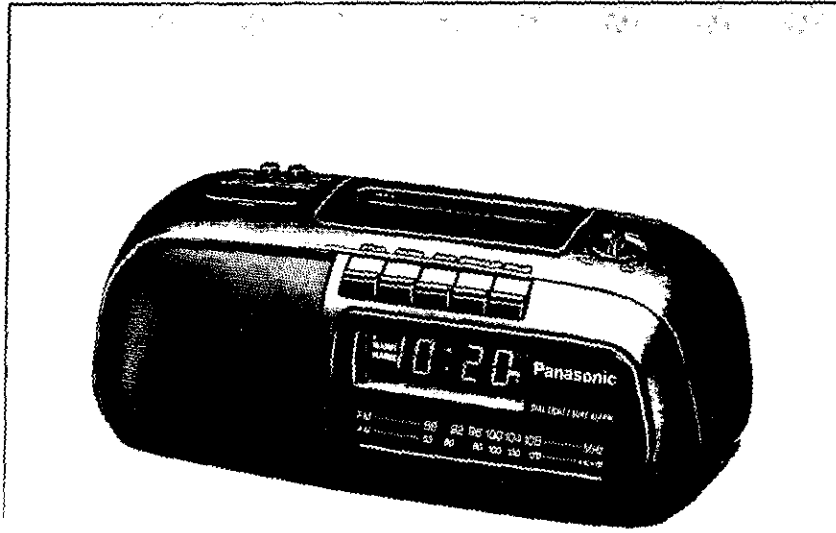


# Panasonic

## Clock Radio Cassette Player

### RC-X160

#### Operating Instructions



P

Before connecting, operating or adjusting this product, please read these instructions completely.

Thank you for purchasing the RC-X160 Clock Radio Cassette Player.

For optimum performance and safety, please read these instructions carefully.

# Table of Contents

## Before Use

<b>Precautions</b> .....	4
Safety .....	4
Installation .....	4
Maintenance .....	5
Service .....	5
<b>Sure Time Battery Back-Up</b> .....	6
Battery installation .....	6
When should the battery be replaced .....	6
Operation .....	7
Notes .....	7

## Functions

<b>Location and Function of Controls</b> .....	8
--	---

## Operations

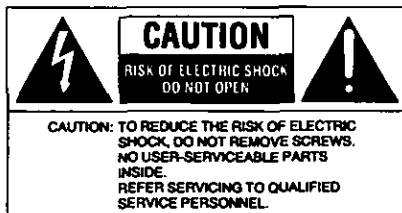
<b>Helpful Hints</b> .....	10
<b>To Set the Correct Time</b> .....	11
<b>Listening to Radio</b>	
<b>Broadcasts</b> .....	12
Antennas .....	13
<b>Listening to Tapes</b> .....	14
Fast forward and rewind .....	15
Pause button .....	15
Full auto-stop .....	15
<b>Concerning Cassette Tapes</b> .....	16
<b>Operation for Dual Wake-Up</b>	
<b>System</b> .....	17
Alarm time setting .....	17
Radio alarm (ALARM 1) .....	18
Tape alarm (ALARM 1) .....	19

Buzzer alarm (ALARM 2) .....	20
Combination of the alarm 1 and the alarm 2 .....	21
<b>Special Features</b> .....	22
Doze operation .....	22
Radio sleep timer .....	23
Radio sleep timer and alarm .....	24

## Reference

<b>Maintenance</b> .....	25
Head demagnetization .....	25
<b>Specifications</b> .....	26
<b>Product Service</b> .....	26
Product information .....	26
<b>Index</b> .....	27

- The following mark and symbols are located on bottom of the unit.



The lightning flash with arrow-head symbol, within an equilateral triangle, is intended to alert the user to the presence of uninsulated "dangerous voltage" within the product's enclosure that may be of sufficient magnitude to constitute a risk of electric shock to persons.



The exclamation point within an equilateral triangle is intended to alert the user to the presence of important operating and maintenance (servicing) instructions in the literature accompanying the appliance.

## **WARNING:**

**TO REDUCE THE RISK OF FIRE OR ELECTRIC SHOCK, DO NOT EXPOSE THIS APPLIANCE TO RAIN OR MOISTURE.**

The model number and serial number of this product can be found on either the top or the bottom of the unit.

Please note them in the space provided below and retain this booklet as a permanent record of your purchase to aid identification in the event of theft.

**MODEL NUMBER** \_\_\_\_\_

**SERIAL NUMBER** \_\_\_\_\_

# Precautions

Before using this unit please read these operating instructions carefully. Take special care to follow the warnings indicated on the unit itself as well as the safety suggestions listed below.

Afterwards keep them handy for future reference.

## Safety

---

1. **Power Source** -- The unit should be connected to power supply only of the type described in the operating instructions or as marked on the unit.
2. **Polarization** -- If the unit is equipped with a polarized AC power plug (a plug having one blade wider than the other), that plug will fit into the AC outlet only one way. This is a safety feature. If you are unable to insert the plug fully into the outlet, try reversing the plug. If the plug should still fail to fit, contact your electrician to replace your obsolete outlet. Do not defeat the safety purpose of the polarized plug.
3. **Power Cord Protection** -- AC power supply cords should be routed so that they are not likely to be walked on or pinched by items placed upon or against them. Never take hold of the plug or cord if your hand is wet, and always grasp the plug body when connecting or disconnecting it.
4. **Nonuse Periods** -- When the unit is not used, turn the power off. When left unused for a long period of time, the unit should be unplugged from the household AC outlet.

## Installation

---

### Environment

1. **Water and Moisture** -- Do not use this unit near water—for example, near a bathtub, washbowl, swimming pool, or the like. Damp basements should also be avoided.
2. **Heat** -- The unit should be situated away from heat sources such as radiators and the like. It also should not be placed in temperatures less than 5°C (41°F) or greater than 35°C (95°F).

## Placement

---

1. **Ventilation** -- The unit should be situated so that its location or position does not interfere with its proper ventilation. Allow 10 cm (4") clearance from the rear of the unit.
2. **Foreign Material** -- Care should be taken so that objects do not fall into and liquids are not spilled into the unit. Do not subject this unit to excessive smoke, dust, mechanical vibration, or shock.
3. **Magnetism** -- The unit should be situated away from equipment or devices that generate strong magnetism.
4. **Stacking** -- Do not place heavy objects on top of the unit.
5. **Surface** -- Place the unit on a flat, level surface.
6. **Carts and Stands** -- The unit should be used only with a cart or stand that is recommended by the manufacturer. The unit and cart combination should be moved with care. Quick stops, excessive force, and uneven surfaces may cause the unit and cart combination to overturn.
7. **Wall or Ceiling Mounting** -- The unit should not be mounted to a wall or ceiling, unless specified in this operating instructions.



## Maintenance

---

(See page 25 for details.)

Clean the cabinet, panel and controls with a soft cloth lightly moistened with mild detergent solution.

Do not use any type of abrasive pad, scouring powder or solvent such as alcohol or benzene.

## Service

---

1. **Damage Requiring Service** -- The unit should be serviced by qualified service personnel when:
  - (a) The AC power supply cord or the plug has been damaged; or
  - (b) Objects have fallen or liquid has been spilled into the unit; or
  - (c) The unit has been exposed to rain; or
  - (d) The unit does not appear to operate normally or exhibits a marked change in performance; or
  - (e) The unit has been dropped, or the enclosure damaged.
2. **Servicing** -- The user should not attempt to service the unit beyond that described in the operating instructions. All other servicing should be referred to qualified service personnel.

# Sure Time Battery Back-Up

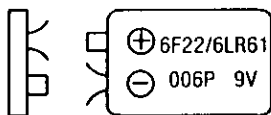
The back-up battery will keep the clock operating during a power interruption. When power is resumed, the display will show the current time.

The alarm time is not affected by a power interruption—so there is no need to reset the alarm.

## Battery installation

---

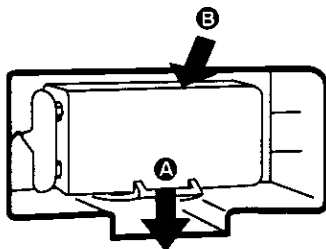
- 1 Connect a 9-Volt battery (not included) to the snaps, observing correct polarity.**  
A battery installed with incorrect polarity may leak and damage the unit.



Bottom of the unit

- 2 Place the battery in the compartment by inserting it in the direction of the arrow **B**, while pushing the battery holder in the direction of the arrow **A**.**

Note no battery cover is used.



## When should the battery be replaced

---

Unplug the AC power cord from the AC power outlet. After several seconds, plug it back into the outlet. If the digits flash continuously, replace the battery with a new one.

Replace the battery with a new one after one year of use (most batteries have a shelf life of approximately one year).

If an extended power failure or interruption occurs, replace the battery with a new one.

## Operation

---

The sure time battery back-up is designed to keep the clock operating in the event of a power failure or interruption. (Such as when moving this unit to a different room.) Whenever a power interruption occurs, the clock display will disappear. However even though the display is completely blacked out, the 9-volt back-up battery will take over as the power source and the present time and the alarm time will be preserved.

Even if the power is not resumed by the wake-up time, the buzzer alarm will activate.

## Notes

---

When the set is unplugged (not in use) for a long time, remove the back-up battery to prevent possible battery leakage.

Power failures may occur at any time of the night or day and can be of a long or short duration.

Most failures are so short that people don't even notice the interruption. These interruptions do, however, affect clocks which do not incorporate a battery back-up.

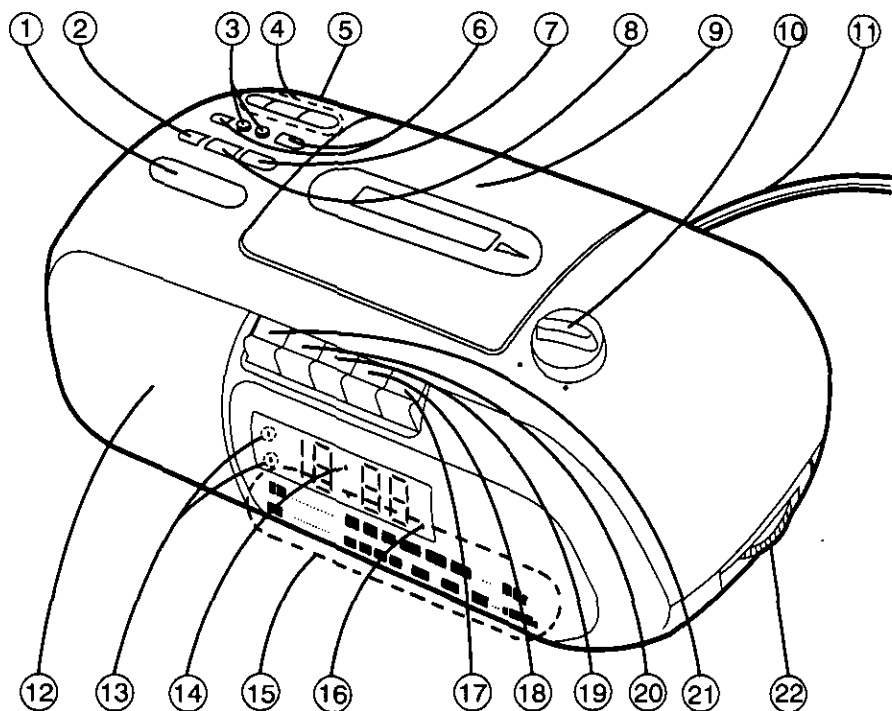
If the power is not resumed by the wake-up time, the radio alarm will not activate.

If the back-up battery goes dead during a power interruption, the present time and alarm time must also be reset after the interruption.

The back-up battery will be exhausted after about 17 hours of total (accumulative) use. (The battery life will vary depending on the frequency of the power interruption.)

After a power interruption, the time shown in the display window may not be always correct (it may gain or lose about six minutes per hour).

# Location and Function of Controls





**① Doze button (DOZE)**

When the alarm activates, but you do not wish to wake up immediately, press this button. The alarm will be quiet for 7 minutes, then the alarm will operate again.

**② Sleep button (SLEEP)**

Press this button when you wish to fall asleep while listening to radio.

**③ Alarm 1 and 2 select buttons**

Press the alarm 1 select button, the alarm 1 indicator will light up. Press the alarm 2 select button, the alarm 2 indicator will light up. Alarm 1 is radio or tape alarm, alarm 2 is buzzer alarm.

**④ Time set buttons (TIME SET)**

The FWD button forwards the displayed time and the REV button reverses it. To forward or reverse the displayed time rapidly, press and hold the FAST button with the FWD or REV button.

**⑤ Band Selector (BAND)**

[back of the unit]

**⑥ Alarm 1 and 2 display/adjust buttons (DISP/ADJ)**

Set the desired time by the time set buttons, while pressing this button. If the alarm 1 and 2 display/adjust buttons are pressed at the same time, the clock display shows the alarm 1 time.

**⑦ Radio button (RADIO)**

Press this button to listen to the radio.

**⑧ Off/time set button  
(OFF TIME SET)**

Press this button to shut off the radio, alarm, doze and sleep operation. Press and hold to set the correct time.

**⑨ Cassette compartment cover**

**⑩ Volume control (VOLUME)**

**⑪ AC power cord**

**⑫ Speaker**

**⑬ Alarm 1 and 2 indicators**

**⑭ Clock display**

**⑮ Radio dial display**

**⑯ PM indicator**

**⑰ Pause button (II PAUSE)**

**⑱ Stop/eject button  
(■ STOP/▲ EJECT)**

**⑲ Fast forward button  
(▶▶ FF)**

**⑳ Rewind button  
(◀◀ REW)**

**㉑ Play button (▶ PLAY)**

**㉒ Tuning control (TUNING)**

# Helpful Hints

Keep the unit away from heating devices and electrical noise generating devices such as fluorescent lamps and motors.

The unit should be kept free from dust, moisture, and vibration, and should not be exposed to direct sunlight.

Do not clean the plastic cabinet with benzine or thinner. Clean it with a solution of soap and water.

Avoid spray-type insecticides. Some insecticides contain chemicals that could cause cabinet deformation.

Do not connect the unit to an AC outlet other than one supplying the specified voltage.

Avoid cuts, scratches, or poor connections in the AC power cord which may result in fire or electric shock hazard. Also excessive bending, pulling, or splicing of the cord should be avoided.

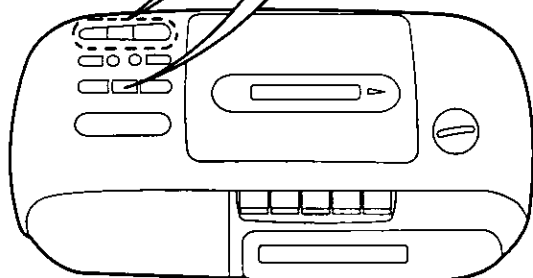
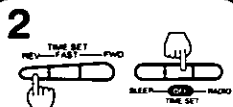
Do not unplug the AC power cord by pulling on the cord. To do so may cause premature failure or shock hazard.

If the unit is not going to be used for a long period of time, remove the back up battery to prevent possible damage due to battery leakage.

# To Set the Correct Time

To set the correct time on the clock display, use the following procedure.

- 1** Connect the AC power cord.



- 1** Connect the AC power cord to your household AC power outlet.

The clock display will begin to flash continuously.

- 2** While pressing the off/time set button, press and hold the time set buttons until the correct time appears on the clock display.

The digits should stop flashing.

To forward or reverse the displayed time rapidly, press and hold the FAST button with the FWD or REV button.

To forward or reverse the displayed time minute by minute, press the FWD or REV button repeatedly.

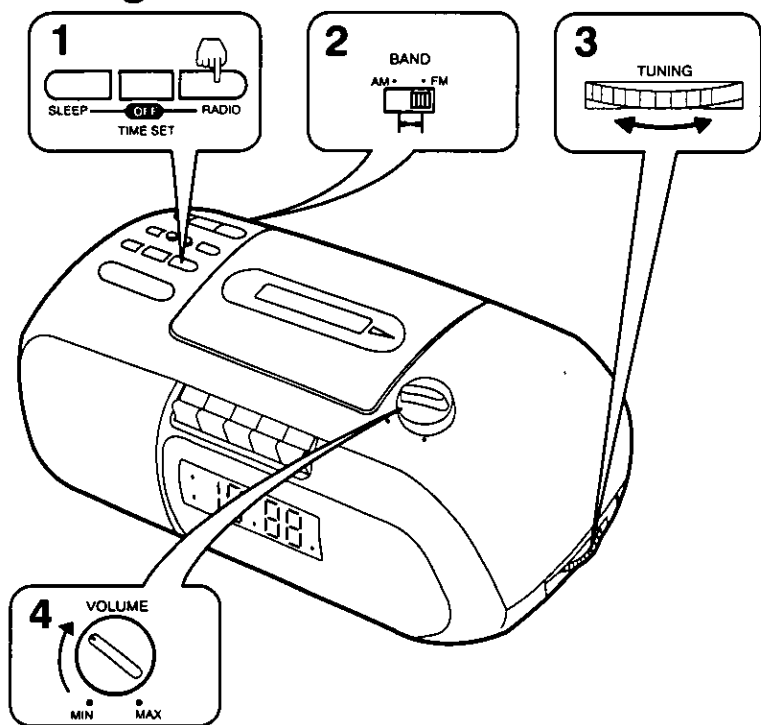
The seconds are automatically set to "0" when the FWD or REV button is pressed.

Observe the PM indicator. A green dot (PM indicator) indicates "PM" and no dot indicates "AM".

The correct time can usually be obtained by listening for time checks on the radio or from telephone time services.

The time set (REV-FAST-FWD) buttons can only activate when the off/time button is pressed.

# Listening to Radio Broadcasts



**1** Press the radio button.

**2** Set the band selector on the back of the unit to "AM" or "FM".

**3** Tune in the desired station with the tuning control.

**4** Adjust the volume control to the desired level.

To turn off the radio, press the off/time set button.

## Antennas

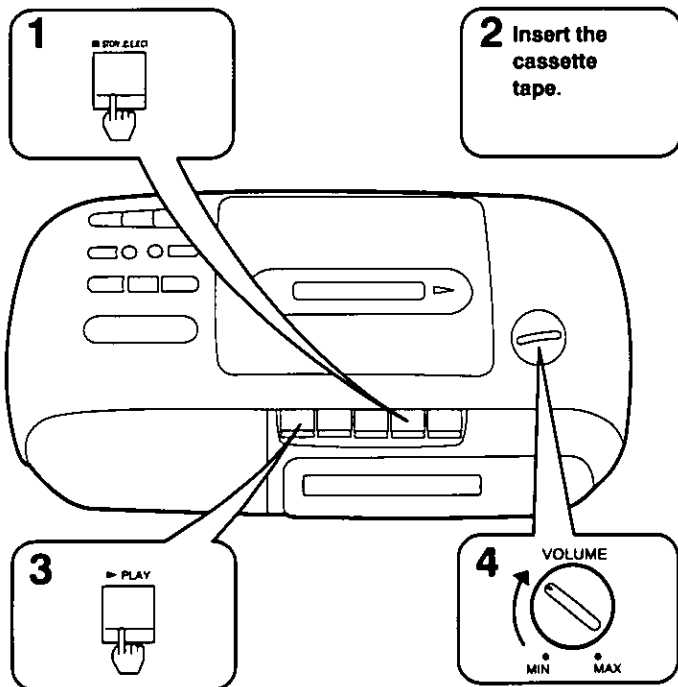
---

**FM:** The AC power cord functions as an FM antenna. To obtain the best FM reception, extend and change the direction of the AC power cord.

**AM:** A sensitive ferrite core antenna is built in this unit to assure excellent AM reception in most areas. To improve the reception of weak stations, turn the unit in the direction which gives the best results.

# Listening to Tapes

Before use, press the off/time set button to turn off the radio. Set alarm 1 select button to off position.



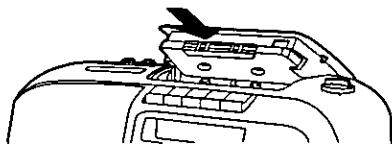
**1** Press the stop/eject button to open the cassette compartment cover.

**2** Insert the cassette tape.

**3** Press the play button to begin tape playback.

**4** Adjust the volume control to the desired level.

To stop playback, press the stop/ eject button.

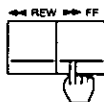


Use normal types of cassette tapes only.

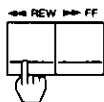
## Fast forward and rewind

---

This unit allows the tape to fast forward or rewind by simply pressing the fast forward or rewind button.



To fast forward the tape, press the fast forward button.



To rewind the tape, press the rewind button.

## Pause button

---



The pause button can be used to temporarily stop the tape from moving during playback.

Do not use the pause button to stop the tape for a long period of time. This may cause damage to the tape.

## Full auto-stop

---

When the tape reaches its end during playback, fast forward or rewind, the automatic stop system will release the operation buttons.

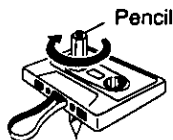
# Concerning Cassette Tapes

## Cassette tapes exceeding 90 minutes

These tapes are handy for their long play-back time but be careful about repeatedly stopping and starting, rewinding and fast forwarding these tapes in short intervals as they are thin, tend to stretch and may become entangled in the machine.

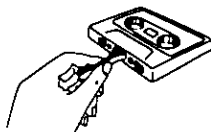
### OK

If the tape loosens, take up the slack by turning the reel in the proper direction.



### NO

Do not handle, or pull the tape out of the cassette.



Use normal types of cassette tapes only. If other tapes are used, you may not obtain optimum performance.

Cassette tapes, both recorded and unrecorded, should not be stored in locations with high temperature, high humidity or direct sunlight. Never place a recorded cassette near a magnetic source, such as a magnet or a TV set as this may affect tape performance.

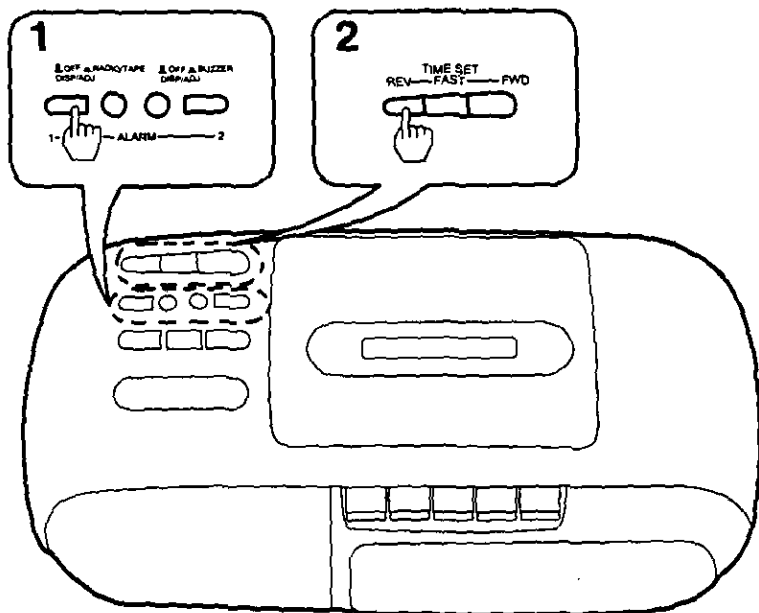


# Operation for Dual Wake-Up System

This set incorporates a dual wake-up system, you can set each alarm time to

any desired wake-up time in the following way.

## Alarm time setting



- 1** Press and hold the alarm 1 (or 2) display/adjust button.  
The clock display shows "12:00".

- 2** While pressing the alarm 1 (or 2) display/adjust button, press and hold time set buttons until desired wake-up time appears on the clock display.  
Make sure the AM or PM setting is correct.

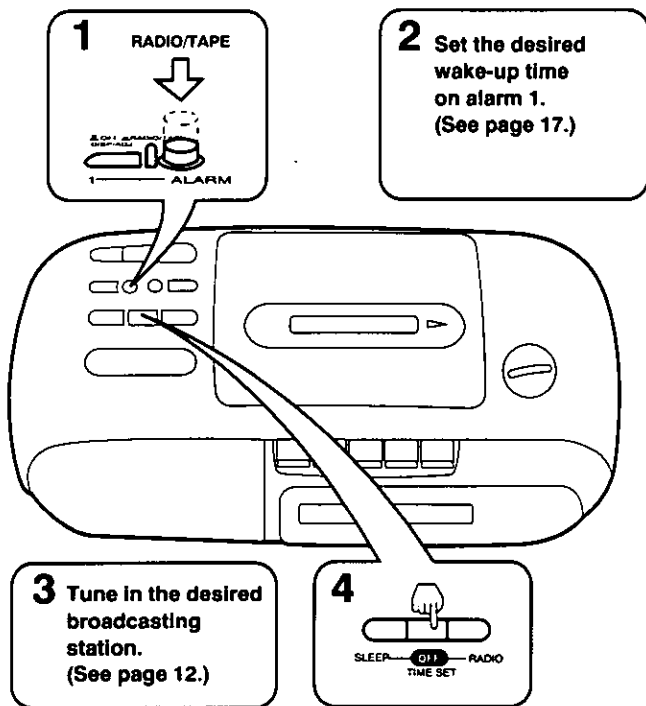
Release the alarm 1 (or 2) display/adjust button, and the present time is restored on the clock display.

To make sure of the preset time, press the alarm 1 (or 2) display/adjust button again.

# Operation for Dual Wake-Up System

(continued)

## Radio alarm (ALARM 1)

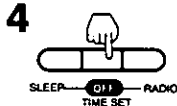


**1** RADIO/TAPE



**2** Set the desired wake-up time on alarm 1.  
(See page 17.)

**3** Tune in the desired broadcasting station.  
(See page 12.)



**1** Press the alarm 1 select button.

The alarm 1 indicator will light up.

**2** Set the desired wake-up time on alarm 1.

(See page 17.)

**3** Tune in the desired broadcasting station.

(See page 12.)

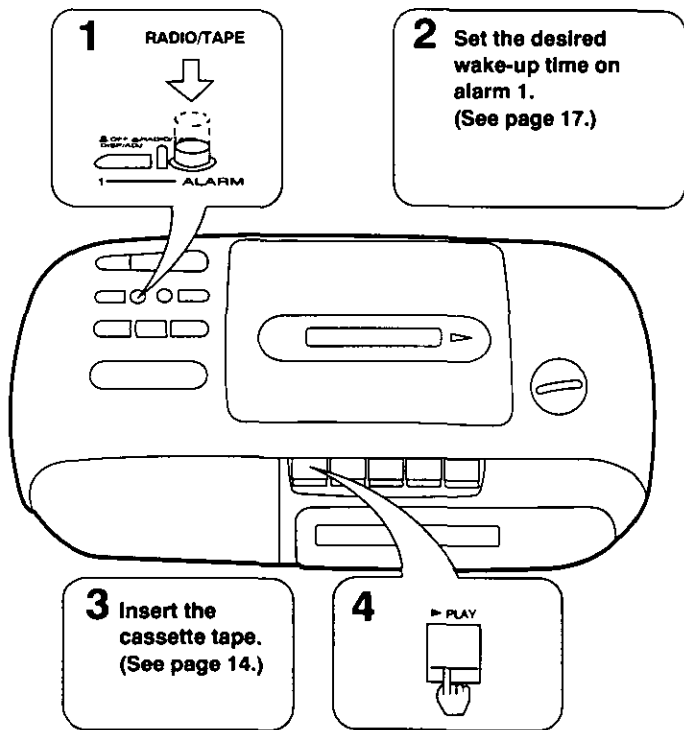
**4** Press the off/time set button.

**At the set wake-up time, the radio alarm will activate.**

The alarm will shut off automatically in about 59 minutes.

**To shut off the alarm before automatic shut-off, press the off/time set button.**

## Tape alarm (ALARM 1)



**1** Press the alarm 1 select button.

The alarm 1 indicator will light up.

**2** Set the desired wake-up time on alarm 1.

(See page 17.)

**3** Insert the cassette tape.

(See page 14.)

**4** Press the play button.

At the set wake-up time, the tape alarm will activate.

- To shut off the tape alarm, press the stop/eject button. The tape play stops and the radio alarm will continue automatically.

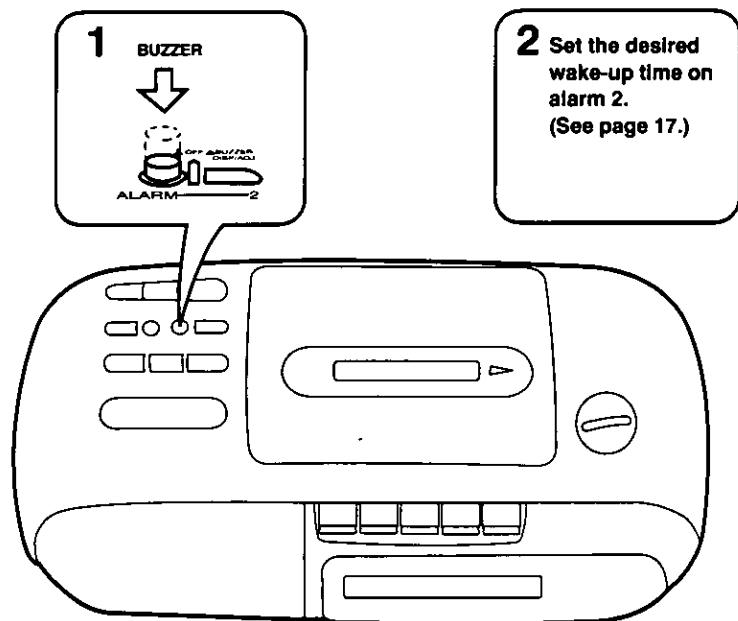
- The alarm will shut off automatically in 59 minutes. When the tape reaches the end during playback, the automatic stop system will release the playback button and the radio alarm will continue automatically.

- To shut off the alarm before automatic shut-off, press the off/time set button.

# Operation for Dual Wake-up System

(continued)

## Buzzer alarm (ALARM 2)



- 1 Press the alarm 2 select button.**

The alarm 2 indicator will light up.

- 2 Set the desired wake-up time on alarm 2.**

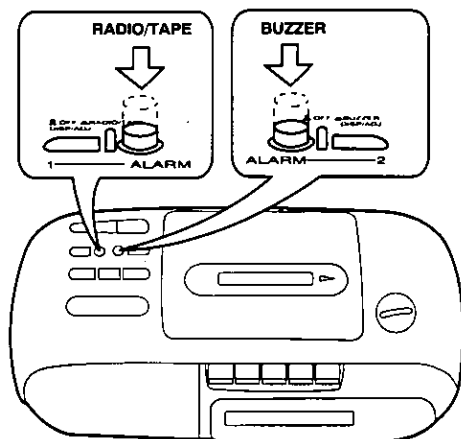
(See page 17.)

**At the set wake-up time, the buzzer alarm will activate.**

The alarm will shut off automatically in about 59 minutes.

**To shut off the alarm before automatic shut-off, press the off/time set button.**

## Combination of the alarm 1 and the alarm 2 —

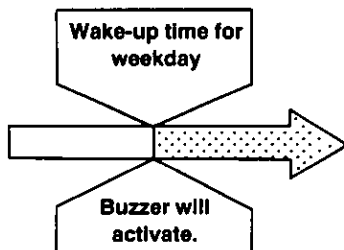


The buzzer alarm and the radio (or tape alarm) are set at the same time. Both alarms will activate simultaneously.

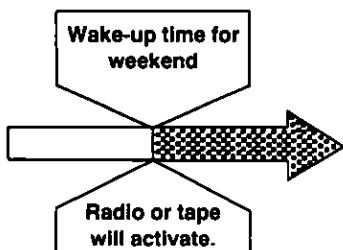
Combination of the alarm 1 and the alarm 2 permits the following convenience.

### Example

Set the wake up time for weekday on the alarm 2, and for weekend on the alarm 1.



**ALARM 1...OFF**  
**ALARM 2...BUZZER**



**ALARM 1...RADIO/TAPE**  
**ALARM 2...OFF**

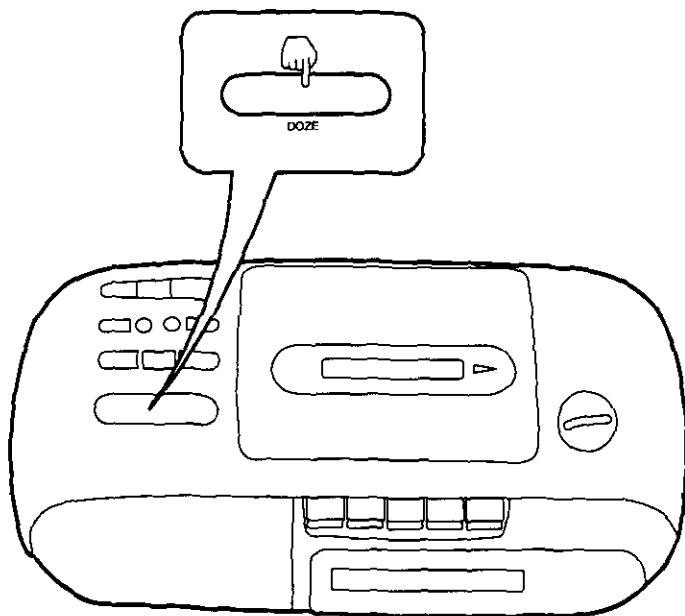
Note:

- The alarm will activate automatically at the same time every day.
- Make sure to set the alarm select button to "OFF" when you want to cancel the alarm.

# Special Features

## Doze operation

---



When the alarm activates, but you do not wish to wake up immediately, press the doze button.

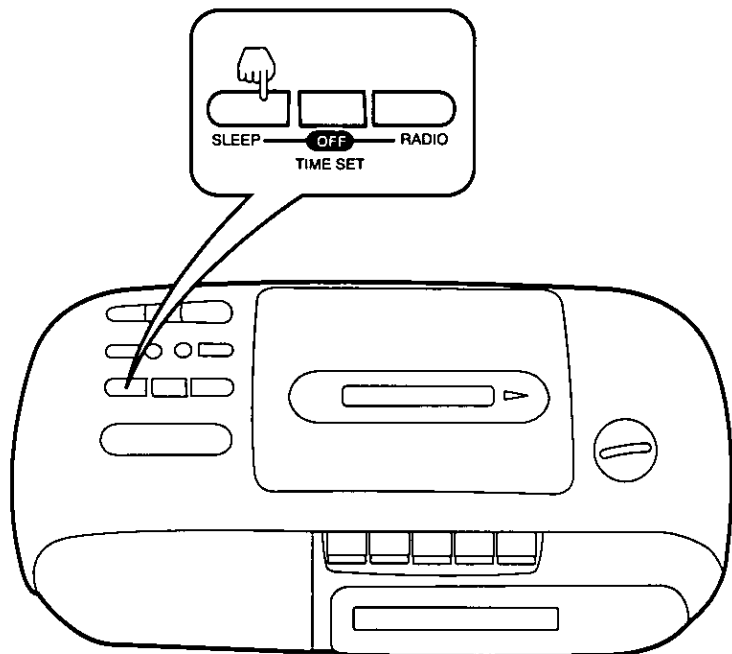
The alarm will be quiet for 7 minutes, then the alarm will operate again.

If you do not need doze time and want to cancel the alarm, press the off/time set button.

While pressing the doze button, the seconds will also appear. (At this time, the clock display changes from hours and minutes to minutes and seconds.)

## Radio sleep timer

---



You can set the clock radio to play up to about 59 minutes, then shut off automatically.

**Press and hold the sleep button until the length of time for which you wish to listen to the radio is shown on the clock display.**

Watch the display as it counts backwards from 59 to 00.

At first, the clock display shows 59 minutes. When you release the sleep button, the correct time returns on the clock display.

During radio-listening, you can confirm the number of minutes remaining by pressing the sleep button and looking at the clock display.

You can change the length of time, for which you wish to listen to the radio, by the time set buttons while pressing the sleep button.

Radio will be shut off automatically in the preset sleep time.

**To cancel the sleep timer and shut off the radio, press the off/time set button.**

# Special Features (continued)

## Radio sleep timer and alarm ---

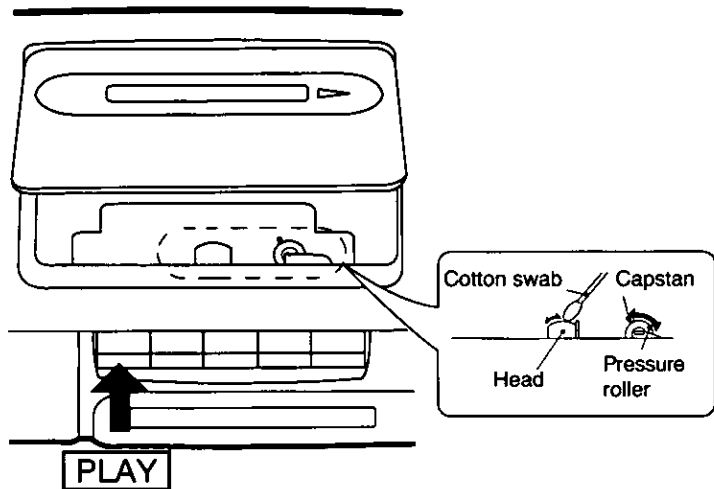
You can set the clock radio to play for the desired time (up to 59 minutes) and shut off automatically, then activate the alarm automatically at the desired wake-up time.

- 1 Set the desired wake-up time and press the desired alarm select button (alarm 1 select button or alarm 2 select button).**

- 2 Set the desired length of time for which you wish to listen to the radio.**  
(See page 23.)



# Maintenance



The head assembly, capstan and pressure roller are in constant contact with the tape. If these parts are dirty, the sound quality will be impaired. Periodically, clean these parts as shown.

1. **Open the cassette compartment cover by pressing the stop/eject button.**
2. **Press the play button.**

The playback head, capstan and the pressure roller can be seen. Clean them with a cotton swab.

If the head assembly is extremely dirty, clean it with a soft cloth dampened with a little alcohol.

The use of cleaning tapes is not recommended, as some are abrasive and may cause premature wear of the heads. Simply, clean the head assembly as described.

Avoid spray-type insecticides. Some insecticides contain chemicals that could cause cabinet deformation.

## Head demagnetization

In order to maintain good sound quality during playback, it is recommended that the head assembly be demagnetized when distortion or poor sound quality persists after cleaning the head.

If the head assembly becomes magnetized, it could create loss of high end frequency response.

Several types of head demagnetizers are available and may be purchased separately at local electronics supply stores. Follow the instructions that are supplied with the device.

Do not bring any type of metal objects or tools such as magnetic screwdrivers in contact with the head assembly.

# Specifications

## Radio

**Frequency Range:** FM; 88–108 MHz  
AM; 525–1710 kHz

## Tape Player

**Frequency Range:**  
**Normal;** 50–14000 Hz  
**Track System:** MONO

## General

### Power

**Requirement:** AC; 120V, 60Hz  
Power consumption;  
8 W  
Battery; 9V (006P/6F22)  
for battery  
back-up

**Speaker:** 8 cm (3")

### Dimensions

**(W×H×D):** 303×113×152 mm  
(12"×4<sup>7</sup>/<sub>16</sub>"×6")

**Weight:** 1600g (3 lb 8 oz)  
without battery

### Note:

Specifications are subject to change without notice.

Weight and dimensions are approximate.

# Product Service

Do not attempt to remove the cover(s) or repair the unit yourself. Refer servicing to qualified personnel only.

## Product information

---

For product service, product information or assistance with product operation, refer to the servicenter directory.

# Index

<b>AC power cord</b> .....	9
<b>Alarm 1 and 2 display/adjust button</b> .....	17
<b>Alarm 1 and 2 indicator</b> .....	9
<b>Alarm 1 and 2 select button</b> ....	18, 19, 20
<b>Antennas</b> .....	13
<b>Band selector</b> .....	9
<b>Clock display</b> .....	9
<b>Doze button</b> .....	22
<b>Fast forward button</b> .....	15
<b>Off/time set button</b> .....	11, 12
<b>PM indicator</b> .....	9, 11
<b>Pause button</b> .....	9, 15
<b>Play button</b> .....	9, 14
<b>Radio button</b> .....	12
<b>Radio dial display</b> .....	9
<b>Rewind button</b> .....	15
<b>Sleep button</b> .....	23
<b>Speaker</b> .....	9
<b>Stop/eject button</b> .....	9, 14
<b>Time set buttons</b> .....	11, 17
<b>Tuning control</b> .....	12
<b>Volume control</b> .....	12, 14

---

**Panasonic Company, Division of  
Matsushita Electric Corporation of America**  
One Panasonic Way  
Secaucus, New Jersey 07094

**Panasonic Company (West) of America, Division of  
Matsushita Electric Corporation of America**  
6550 Katella Ave.  
Cypress, CA 90630

**Panasonic Sales Company, Division of  
Matsushita Electric of Puerto Rico, Inc.**  
San Gabriel Industrial Park  
65th Infantry Ave. Km. 9.5  
Carolina, P.R. 00630

**This file has been downloaded from:**

[www.UsersManualGuide.com](http://www.UsersManualGuide.com)

User Manual and User Guide for many equipments like mobile phones, photo cameras, mother board, monitors, software, tv, dvd, and others..

Manual users, user manuals, user guide manual, owners manual, instruction manual, manual owner, manual owner's, manual guide, manual operation, operating manual, user's manual, operating instructions, manual operators, manual operator, manual product, documentation manual, user maintenance, brochure, user reference, pdf manual